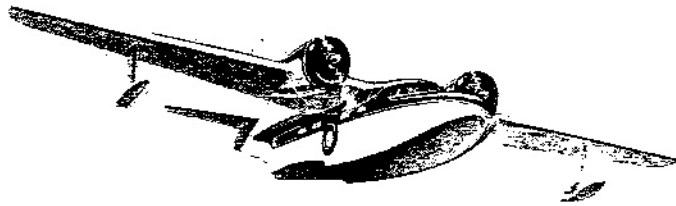
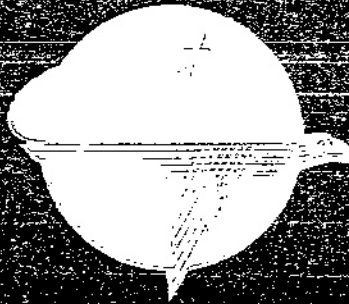


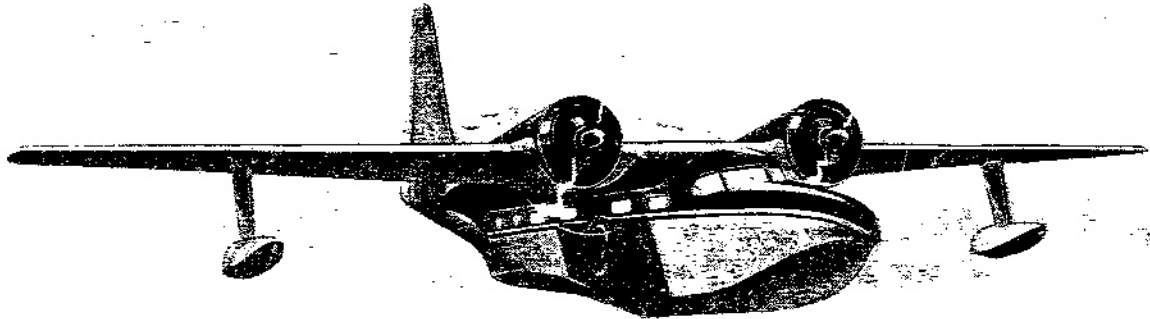
ANNOUNCING

Mallard
Amphibian



GRUMMAN AIRCRAFT ENGINEERING CORPORATION
BETHPAGE, L. I., N. Y.

World's Foremost Builders of Amphibians

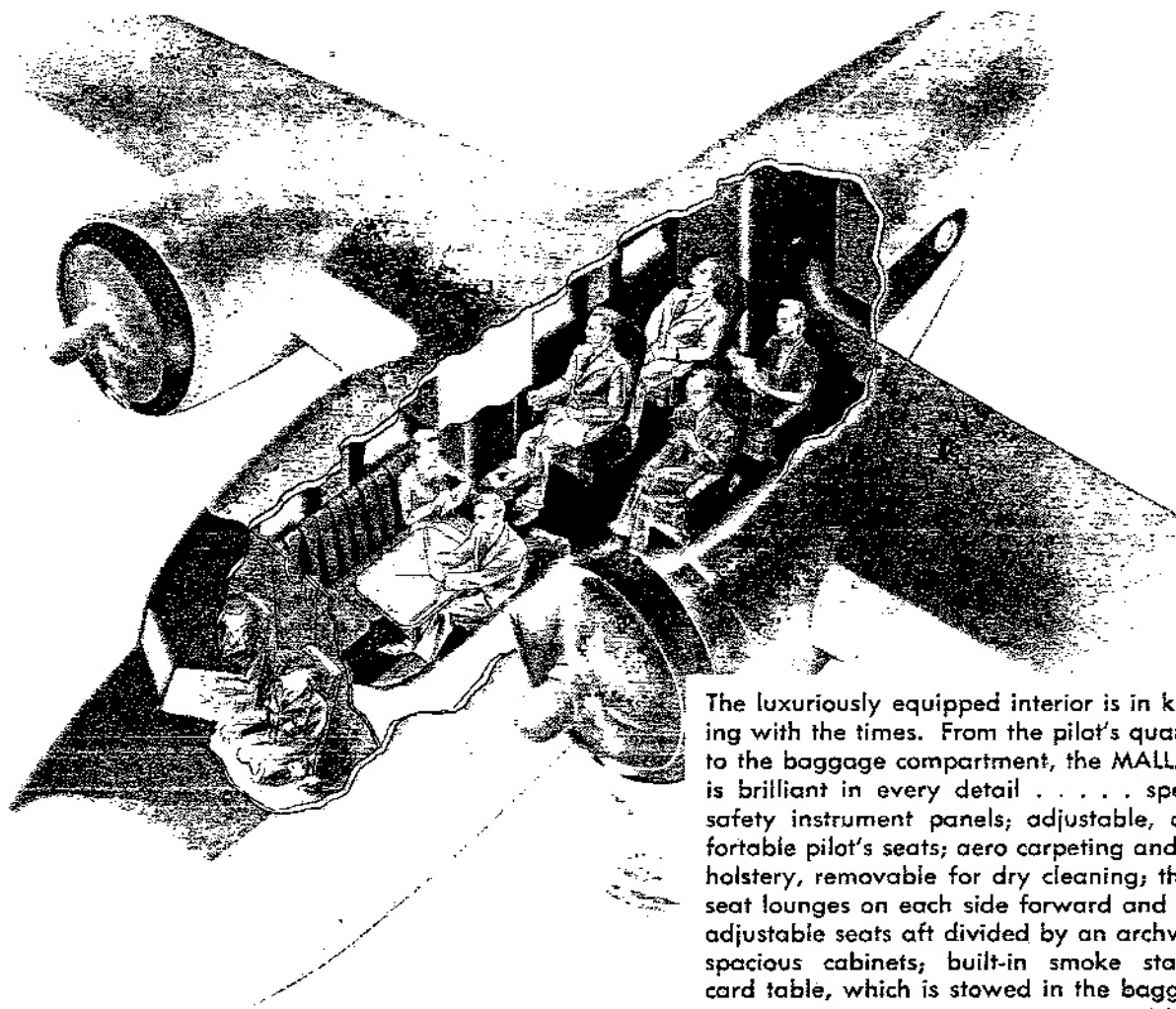


The
Mallard . . . fast and sleek . . . takes its place in the line of successful Grumman Amphibians. Thru the years, the Duck, the Widgeon, the Grey Goose and now—the MALLARD . . . an 8-10 place, tricycle landing gear, Pratt and Whitney "H" Wasp-Powered Amphibian.

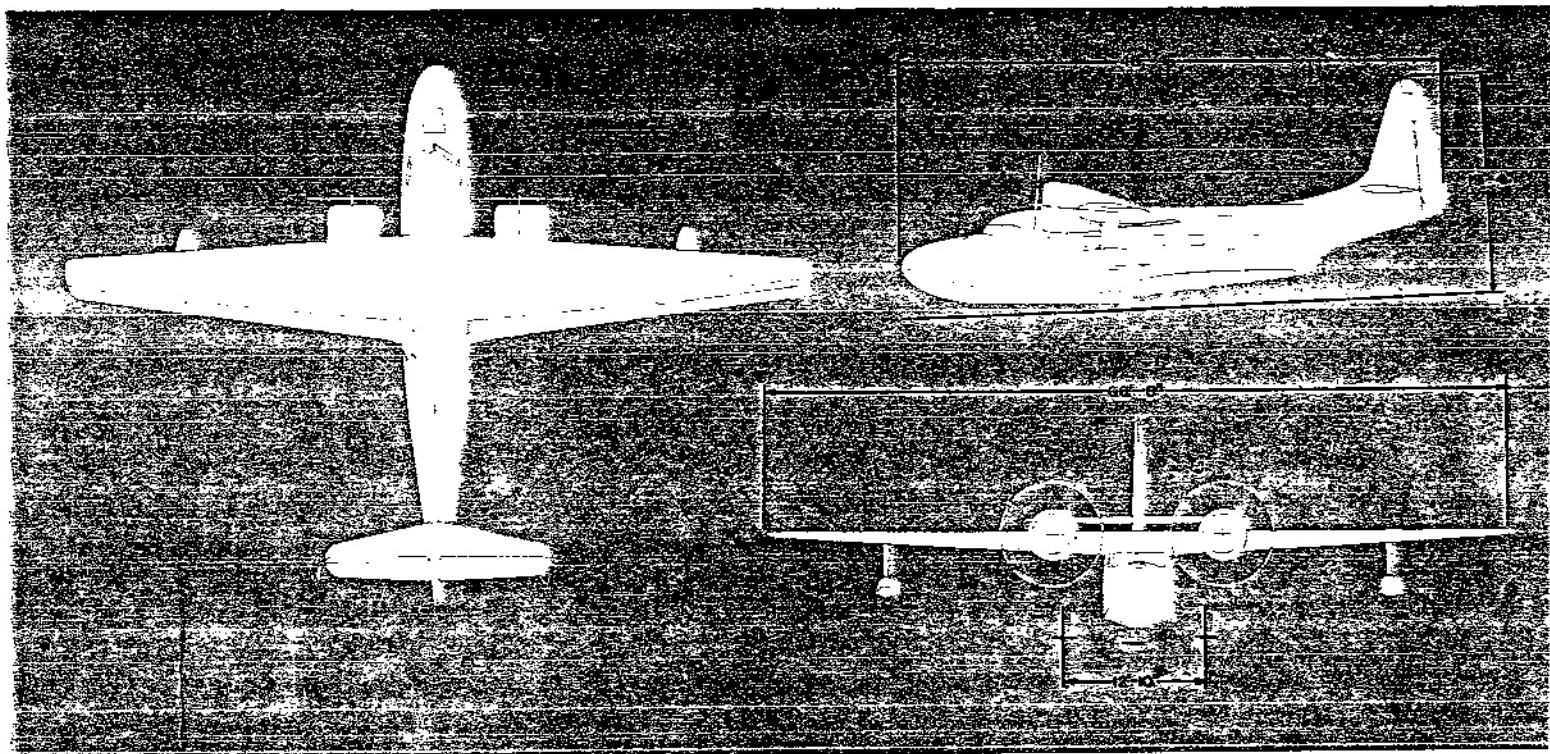
Ideal for executive and corporate use, the MALLARD is also well suited for airline and freighter use along the airways and waterways of the world. It offers many outstanding features . . . clean exterior, richly appointed interior, high performance, exceptional utility. Private owners and business people, too, will find the MALLARD fills all requirements for an airplane combining high cruising speed and long range.

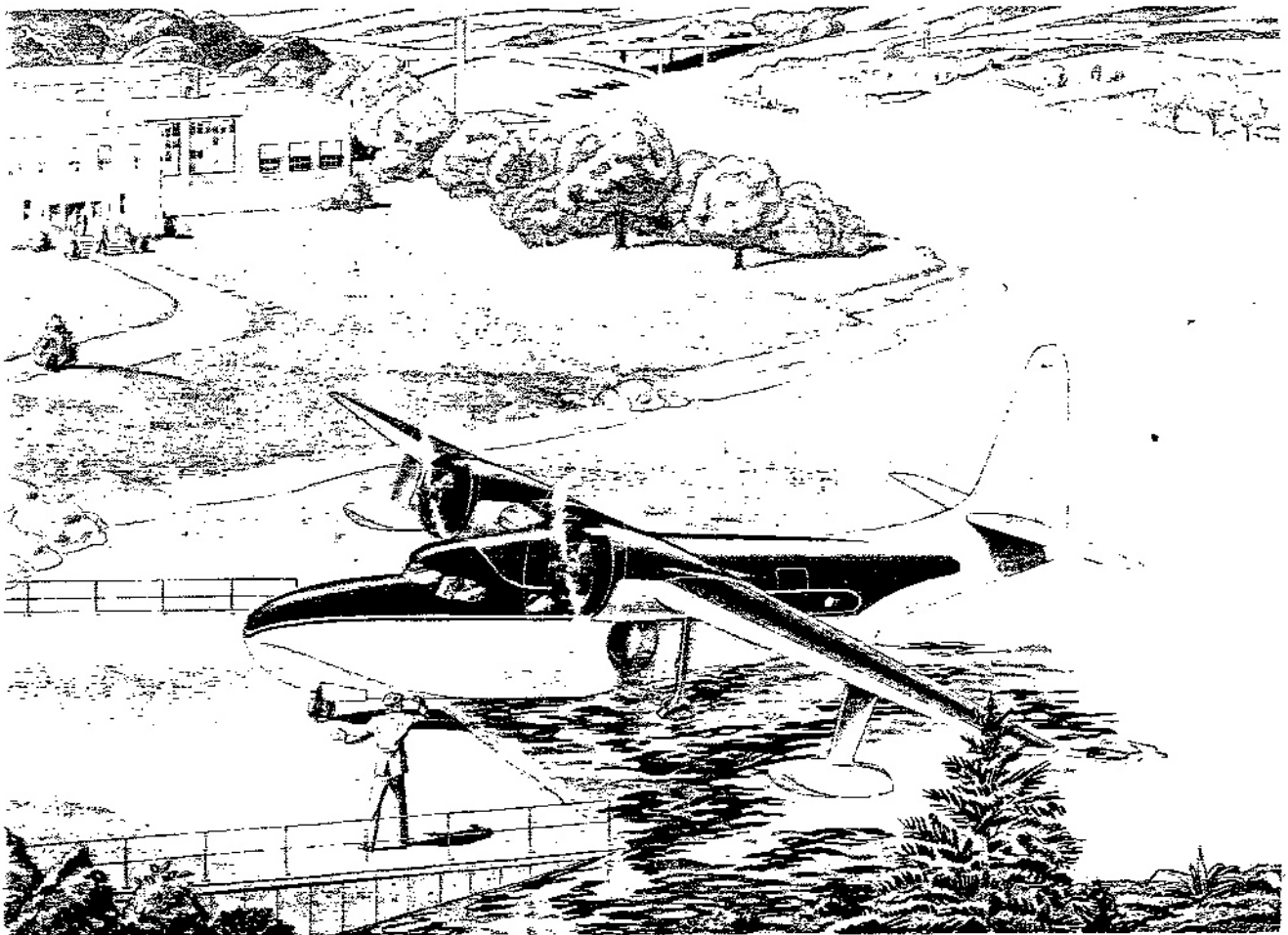
An amphibian having the superior, single-engine performance of the MALLARD provides the utmost in safety. The clean exterior of the MALLARD is the result of years of hydrodynamic and aerodynamic research and development.

Demonstration mock-up is available at our plant.



The luxuriously equipped interior is in keeping with the times. From the pilot's quarters to the baggage compartment, the MALLARD is brilliant in every detail special safety instrument panels; adjustable, comfortable pilot's seats; aero carpeting and upholstery, removable for dry cleaning; three-seat lounges on each side forward and four adjustable seats aft divided by an archway; spacious cabinets; built-in smoke stands; card table, which is stowed in the baggage compartment when not in use; special lighting fixtures; dressing room; individual control heating and ventilation system; and many other features.





THE MALLARD'S VERSATILITY SETS NEW STANDARDS IN TRANSPORTATION

Specifications:

Span 66' 8" Overall length 48' 4"
 Height (max.) 19' 4" Wing area 444 sq. ft.

Maximum speed 215 MPH
 Cruising speed—55% power 182 MPH

Rate of climb—sea level 1,400 FPM.
 Ceiling—single engine operation 10,500 ft.

Gross weight 11,500
 Useful load 3,085
 Radio and other equipment 475

Power plant
 2 Pratt & Whitney "H" Wasp Engines
 Take-off rating each 600 HP
 Propellers Hamilton Standard
 Constant Speed Hydromatic

RANGE — LOAD DATA

Crew	Passengers	Baggage Lbs.	CRUISING SPEED	
			180 MPH	200 MPH
2	4	180	1,090 Miles	915 Miles
2	6	240	830 Miles	695 Miles
2	8	300	570 Miles	485 Miles

Standard equipment includes:—radio, flares, fire extinguisher system, instruments (engine and flight), custom interior, lavatory and dressing room. Provisions have been made in the design for other special equipment as required or desired by the owner, at additional cost.

The above weights and performance figures are based on the manufacturer's best estimates and may be subject to slight modifications after flight tests.