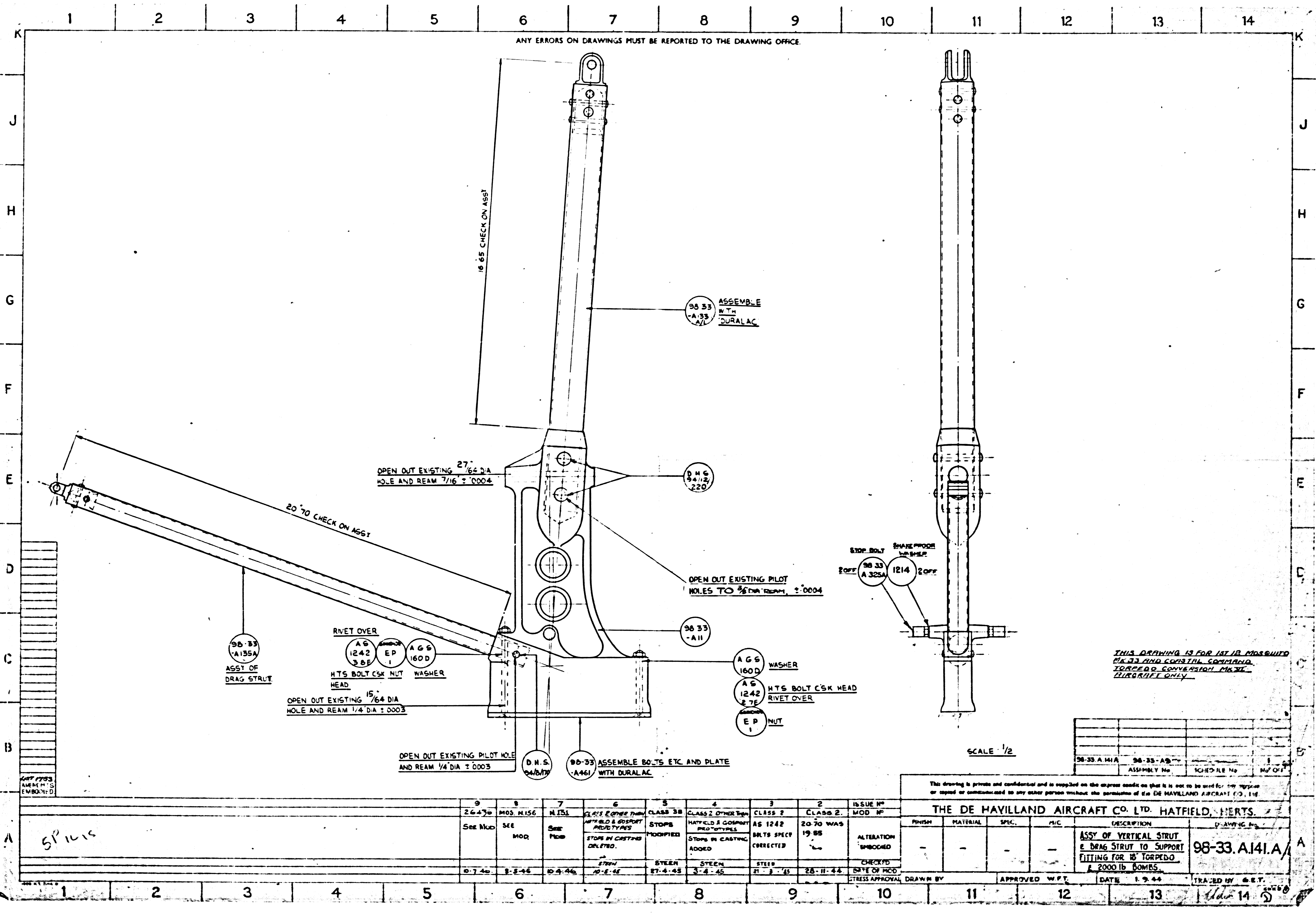


ANY ERRORS ON DRAWINGS MUST BE REPORTED TO THE DRAWING OFFICE.



THIS DRAWING IS FOR 1ST IS. M.O.S. QUINO MK. 33 AND COASTAL COMMAND TORPEDO CONVERSION MK. 33 AIRCRAFT ONLY

98-33-A141A	98-33-A141A	ASSEMBLY No	10157-116 No	1

This drawing is private and confidential and is supplied on the express condition that it is not to be used for any purpose or copied or communicated to any other person without the permission of THE DE HAVILLAND AIRCRAFT CO. LTD.

THE DE HAVILLAND AIRCRAFT CO. LTD. HATFIELD, HERTS.										ISSUE NO MOD NO	
FINISH			MATERIAL		SPEC.		P.I.C.		DESCRIPTION		
									ASSY OF VERTICAL STRUT & DRAG STRUT TO SUPPORT FITTING FOR 18 TORPEDO & 2000 LB BOMBS.		
DRAWN BY			APPROVED W.P.T.		DATE 1.9.44		TRACED BY		98-33.A141.A		

SP1115